

# Fastlane Speedgates

## Advantages

### ■ More Secure:

- Different height glass barrier options available to deter people from climbing over.
- 24 beam IR detection matrix provides unsurpassed tailgate detection and deterrence; tailgaters are detected following as close as 5 mm behind authorised users.
- Barriers are designed to close quickly and safely behind users after they have cleared the lane therefore deterring tailgaters.
- 2-stage alarm response: early audible warning alarm followed by a secondary output for a higher security response e.g. to trigger CCTV or lock doors.

### ■ Fastest Throughput –

Throughput of up to 1 person per second means a greater return on investment and often means fewer lanes are required, with less wasted time in queues leading to greater user acceptance.

### ■ Intelligent -

Retracting or swinging glass barriers intelligently control traffic flow while maximising throughput. Barriers stay open while additional authorised people walk through - even if they are walking in the opposite direction.

### ■ Unsurpassed Accuracy –

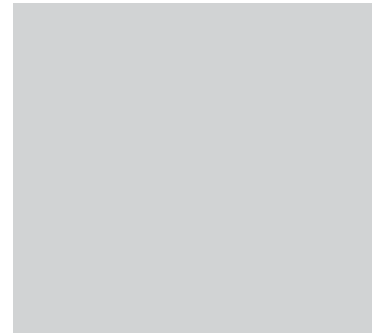
Virtually eliminates false alarms. The intelligence of Fastlane enables the system to differentiate between body mass and small objects such as umbrellas etc. This increases user and guard acceptance, avoiding “tune-out” from excessive false alarms.

### ■ Easiest Installation and Ongoing Maintenance –

CAT 5 interconnections provide simplicity. Industry proven technology and onboard diagnostics to ensure maximum system up-time.

### ■ Safety –

Fastlane Speedgates feature up to 8 safety beams designed to stop the barriers from moving in the event that any of the beams are broken. The units feature a fire alarm input to allow for unimpeded emergency egress and the units can be configured to fail safe in the event of power fail.



## Concept

Fastlane Speedgates are the very latest in high tech entrance control systems and are designed to ensure only one person gains access for each authorised card presented. Fastlane Speedgates use glass barriers in conjunction with state of the art optical tailgate detection technology to provide a high throughput security gate. The glass barriers are designed to work in a normally closed mode and swing or retract inside the pedestal after a valid card has been presented to allow the authorised user to pass.

The Speedgates design concept allows a flexible approach to providing effective access control in areas where previously security had been desirable but the associated aesthetic implications had been unwelcome or prohibitive.

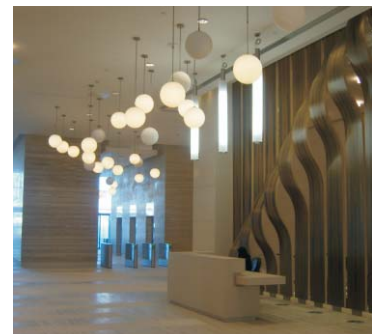


## Fast Throughput

The Fastlane Speedgates feature a Throughput Management system. When activated the barriers stay open after an authorised entry for a defined period of time to await another authorised card. This negates the need for the barrier to open and close in between authorised people at peak traffic times.

## Disabled Access

Fastlane Speedgates can be installed in a number of ways to allow for wheelchair access to make the installation compliant with the UK Disabilities and Discrimination Act (DDA) as well as most similar international standards. Audio and visual feedback is provided as standard.



[www.fastlane-turnstiles.com](http://www.fastlane-turnstiles.com)



# Setting New Standards In Entrance Control



## Advanced Intelligence

Fastlane uses a multi infra- red beam matrix coupled with a custom designed microprocessor running an opinion-forming "entity management" system.

The advantage of this new system is that it "thinks" in real time. When beams are broken the system analyses the speed and pattern of the beam breaks and then links associated beam breaks to entities. The result is that the system can accurately position the size, shape and speed of individual entities in the lane. By accurately positioning entities in the lane the system can accurately detect tailgaters as close together as 5 mm.

The new technology allows the system to operate more safely as it forms an opinion as to whether the barriers can be safely closed based upon knowing where the people are in the lane, how big they are and how fast they are moving in relation to the barriers' position, this reduces the chance of a collision between the users and the barriers and it has the added benefit that the barriers can close faster behind authorised users thereby closing the lane to unauthorised users.

Another advantage of being able to track multiple entities in the lane is that the system does not have to wait for one authorised user to pass through the lane before a second authorised person can begin to be processed. This generates much faster throughput rates.

Finally, if additional beam breaks occur while an entity is in the lane the system decides whether they are associated with existing entities in the lane or represent new ones entering the lane. This results in many fewer false activations from umbrellas, briefcases, coats etc.

## Options



### Glasswing

The Fastlane Glasswing is designed for high throughput sites and uses fast-acting retracting glass barriers in conjunction with state of the art optical technology to provide a high throughput security gate. The glass barriers are designed to work in a normally closed mode and retract inside the pedestal after a valid card has been presented to allow the authorised user to pass.

The fast moving glass barriers close behind the authorised person to deter tailgaters. The barriers are positioned in the middle of the pedestal to allow true bidirectional control and automatic free exit if desired.



### Glassgate

Fastlane Glassgate uses glass barriers in conjunction with state of the art optical technology to provide a high throughput security gate. The bi-directional glass barrier is designed to work in a normally closed mode and open after a valid card has been presented to allow the authorised user to pass. The glass barrier closes behind the authorised person to deter tailgaters.

The glass barrier moves away from the authorised pedestrian. In the event of other authorised users trying to use the lane the barrier will stay open, even if they are walking in the opposite direction. The familiarity of the 'door-like' action of the barrier gives users confidence in operating the system, ensuring quick acceptance.



Manufactured by:  
Integrated Design Ltd  
Feltham Point  
Browells Lane  
Feltham  
Middlesex  
TW13 7EQ, UK

t: +44 (0) 208 890 5550  
f: +44 (0) 208 890 2444  
e: [info@idl.co.uk](mailto:info@idl.co.uk)  
w: [www.idl.co.uk](http://www.idl.co.uk)  
w: [www.fastlane-turnstiles.com](http://www.fastlane-turnstiles.com)

For further information please contact your local dealer or the manufacturer

Installation photos may not represent current production models

